

Installing Wakanda

You can either download **Wakanda Server** and **Wakanda Studio** separately for your computer configuration or download the "All in one" archive.

64-bit and 32-bit Versions

Wakanda Server is available in one version for the Mac and two versions on Windows: 32-bit or 64-bit.

Wakanda Studio is only available in a 32-bit version.

The following table describes the available combinations:

	Windows	Mac OS	Linux
Wakanda Server	32-bit or 64-bit (*)	64-bit	64-bit
Wakanda Studio	32-bit	32-bit	n/a

(*) If you are using a 32-bit version of Windows, you need to install the 32-bit version of Wakanda Server. If you are using a 64-bit version of Windows, you can either install the 64-bit or the 32-bit version of Wakanda Server; however, the 64-bit version is highly recommended for this configuration.

Note: To check if your current configuration is compatible, please refer to Wakanda's **System Requirements**.

Installing Wakanda Studio and Wakanda Server

To install Wakanda Studio and Wakanda Server at the same time, follow the directions below:

1. Download the "All in one" archive for your computer system (Macintosh or Windows).
2. Unzip the archive.
3. Place both Wakanda Studio and Wakanda Server in the same folder.

If you do not place them in the same folder, Wakanda Studio will ask you to locate Wakanda Server.

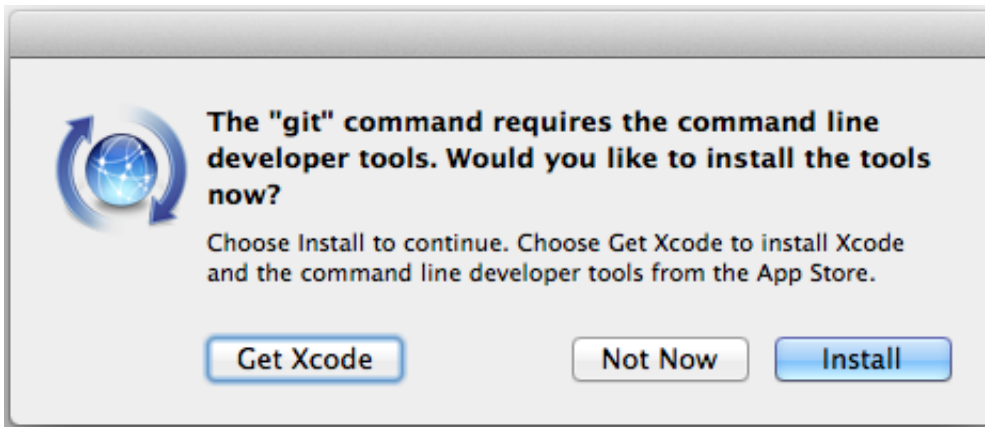
Installing Wakanda Studio

To install Wakanda Studio, follow the directions below:

1. Download Wakanda Studio for your computer system (Macintosh or Windows).
2. Unzip the archive.
3. Launch Wakanda Studio.

Wakanda Studio doesn't need Wakanda Server immediately, but when it does, it will ask you to locate it.

Note OS X: On OS X 10.8 or higher, you may have the following notification at first launch, stating that *Git* is not present and should be installed:



*Using Git features is not mandatory in Wakanda Studio. If you do not intend to use it, you can click **Not Now** (you will be able to install Git later if necessary). Otherwise, just click **Install** to launch the installer. For more information, please refer to the [Git Services](#) section.*

Installing Wakanda Server

To install Wakanda Server, follow the directions below:

1. Download Wakanda Server for your computer system (Macintosh or Windows).
2. Unzip the archive.
3. Launch Wakanda Server.

Once launched, Wakanda Server is moved to the background. To access it, you need to launch Wakanda Studio.

Note: For detailed information about installation on a Linux platform, please refer to the [Installing Wakanda Server on Linux](#) section.

System Requirements

System Requirements

The Wakanda platform requires the minimum following operating systems and web browsers:

Wakanda Server

- Windows Vista 32-64 bit, Windows 7, or Windows Server 2008
- Mac OS X 10.6 (Snow Leopard) with a 64-bit processor machine
- 64-bit Linux (Wakanda Server is tested on Ubuntu 2.6)

Wakanda Studio

- Windows Vista 32-64 bit, Windows 7, or Windows Server 2008
- Mac OS X 10.6

Web Browsers

- Google Chrome
- Firefox
- Safari
- Internet Explorer 9

This section lists the feature limitations regarding the operating system.

Linux

- The **Image API** is only partially supported on Linux platforms. Image can be read but you cannot modify their properties using **height** or **width** for example. For more information, please refer to the **Image Instances** section.

Libraries and Plug-ins Loaded by WAF

The following libraries and plug-ins are loaded by WAF in the current version of Wakanda:

- jQuery 1.7.1
- jQuery UI 1.8.17
- SVG for jQuery 1.4.3
- Raphael 1.5.2
- g.Raphael 0.4.1
- jQuery.UI.iPad plugin
- iScroll Lite Edition based on iScroll v4.0 Beta 4
- BeautyTips 0.9.5-rc1
- TinyMCE 3.4.7

Installing Wakanda Server on Linux

This section provides specific information on how to install, launch, or remove Wakanda Server on a Linux OS.

Note: This section covers both Wakanda Server (community version) and Wakanda Enterprise Server installation processes. If you are installing Wakanda Enterprise Server, just use "wakanda-enterprise-server" ("wakanda-enterprise" until v9) instead of "wakanda-server" ("wakanda"). For example, to unzip an archive, enter `tar -xzvf wakanda-enterprise_9.0-169023_i386.tgz`.

Wakanda binaries

Wakanda Server binaries have been renamed after v9. You may have to adapt commands depending on the version you use. The following table provides the new names:

Description	v9 binaries	v10 (and higher) binaries
Wakanda Server (Community edition)	wakanda	wakanda-server
Wakanda Server (Enterprise edition)	wakandaenterprise	wakanda-enterprise-server

Selecting the Installation Option

When downloading Wakanda Server for Linux from the wakanda.org web site, you will have to choose between two kinds of installation files:

- a targz archive (.tgz): this simple ZIP archive only contains the Wakanda Server files.
- an "All-in-One" installer, which is a *debian* package (.deb file): this package provides you with additional automatic features to handle the Wakanda Server installation on your Linux.

Select your installation option depending on your needs and your Linux environment requirements.

Using the ZIP Archive

If you have downloaded the Wakanda Server ZIP archive from wakanda.org, you just need to decompress it.

To unzip the archive, you can type in the console:

```
tar -xzvf <archiveName>
```

For example: `tar -xzvf wakanda_7.0-148060_i386.tgz`

Launching Wakanda Server

To launch Wakanda Server, you just need to type in the console:

- if you are working from the exe file directory:

```
./<executableFileName>
```

For example: `./wakanda`

- from any other directory: type the full path of the executable file name.

Using the Installer Package

If you have downloaded the Wakanda Server *debian* package, enter in the following command line in the console:

```
sudo dpkg -i <packageName>
```

For example: `sudo dpkg -i wakanda_7.0-148060_i386.deb`

This instruction will execute the following operations:

- A "wakanda" folder is created in /opt with all necessary binaries and license files.
- A symbolic link is created from /usr/local/bin/wakanda to the /opt/wakanda/bin/wakanda executable file.
- A script is added to launch Wakanda Server as a service. This script is stored at the following location: /etc/init.d/wakanda
- A "wakanda" user is created.

Launching Wakanda Server

Once you have installed Wakanda Server with the installer, you can either launch it using the symbolic link or through the service.

- **Using the symbolic link**
You just need to enter in the console:

```
wakanda
```

Warning: For security reasons, you should not launch Wakanda Server under the root account (by entering "sudo wakanda"). It is recommended to use the current user account or the "wakanda" user account.

- **Using the Service**
The installer package provides you with a service that you can use to manage the Wakanda Server. The following commands are then available through the console:

Command	Action
sudo service wakanda start	Starts Wakanda Server
sudo service wakanda stop	Stops Wakanda Server
sudo service wakanda restart	Restarts Wakanda Server
sudo service wakanda status	Returns the Wakanda Server status

Running Wakanda Server on port 80

On Linux, ports 0 to 1023 require specific access privileges. To make the procedure easier, the installation script uses `setcap` to give Wakanda Server the required capabilities to use these ports.

Wakanda Server has the following dependencies:

- Wakanda binary has a dependency on the `cap-ng` library. Any attempt to run Wakanda on a system missing this library will result in the following type of runtime error: `'error while loading shared libraries : libcap-ng.so.0: cannot open shared object file: no such file or`

directory'.

- Wakanda package has two dependencies: on the **setcap** and **chrpath** command line utilities.

Users and developers need these packages:

Package	For user or developer	Description
libcap-ng-dev	Developer only	a wrapper library around Posix capabilities, with headers
libcap-ng0	User only	a wrapper library around Posix capabilities
libcap2-bin	Everyone	provides setcap binary, needed by installer script
libcap-ng-utils	Everyone	(recommended only) provides useful diagnosis tools such as netcap

Developers can update their systems by means of the following command:

```
sudo apt-get install libcap-ng-dev libcap2-bin libcap-ng-utils
```

Users can run this command:

```
sudo apt-get install libcap-ng0 libcap2-bin libcap-ng-utils
```

Compatibility Note: Since *cap-ng* dependency is not available in 32-bit mode on Compilatux, Wakanda 32-bit releases do not support the *daemonize* mode for handling access rights.

Uninstalling Wakanda Server

If you need to remove all Wakanda files from your disk, you can do a standard deletion or a purge:

- To do a standard deletion, type in the console:

```
sudo dpkg -r wakanda
```

This operation executes quickly but is not as complete as a purge.

- To do a purge, type in the console:

```
sudo dpkg -purge wakanda
```

This operation deletes all files with relation to the package.

Finding Out the Build Number

Once the Wakanda Server is launched, you can get its build and version number (for example **Wakanda Server 6 Build 6.147688**) at any time using the following command line:

```
option --version
```

Accessing the Preference Files

Wakanda Server preference files are located in the **.Wakanda Server** (or **.Wakanda Enterprise Server**) folder. This folder is located:

- if you used the ZIP archive, in the **home** directory of the user account used to launch the server,
- if you used the installer package, in the **/opt/wakanda/** directory.

The preference folder contains the following subfolders:

- **UserCache:** Information about the admin solution (Logs, Directory, Projects)
- **UserData:** Information about the executed servers
- **UserDoc:** Custom themes and widgets created
- **UserPref:** Links to recent solutions